



Magnificent Michigan

Friday, August 15-
Wednesday, August 20, 2025

- Lake Michigan crossing SS. Badger
- Overnight in Ludington Holiday Inn Express
- Call of the Wild Museum
- Thunder Bay Resort overnight
 - Carriage ride to cabin
 - Gourmet Chef prepared 5 course meal
 - Elk Viewing
- Tour Castle Farms Gardens & Lunch
- Shuttle Ferry to Mackinaw Island
- Two nights at Lake View Hotel- Mackinac Island
- Dinner Yankee Rebel Tavern
- Horse drawn carriage tour of island
- Lunch buffet at the Grand Hotel
- Free time to enjoy Mackinac Island
- Shuttle Ferry to Mainland Michigan
- Visit Tahquamenon Falls
- Lunch Tahquamenon Falls Brewery & Pub
- Pictured Rocks Boat Cruise
- Lake view room Holiday Inn Express Munising
- Palms Book State Park Big Springs Kitch-iti-kipi
- Motorcoach transportation, Discovery Tour host, taxes & gratuities
- 13 meals, 5 Breakfast, 4 lunch, 4 dinner

Pricing Per Person

Single - \$3275

Double - \$2460

Triple/Quad- \$2200



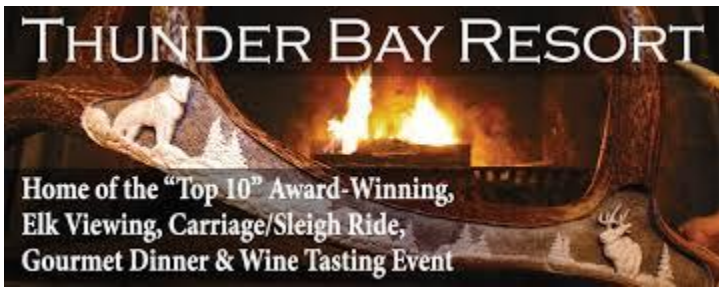


Island Carriage Ride



Crossing the Mackinac Bridge

Grand Hotel lunch buffet



Gourmet Dinner & Carriage Ride



Lakeview Hotel

Pictured Rocks Cruise



Palms Book State Park



Call of the Wild Museum

Terms and Conditions

Payments: A deposit of \$200.00 per person is due at the time of booking. Your final payment is due no later than **May 1, 2025**. Make checks payable to Discovery Tours and send deposit and final payment to: Discovery Tours, 1139 Pennsylvania Ave, Sheboygan, WI 53081.

Cancellations/Refunds: If it is necessary to cancel, a refund will be made if cancellation is received prior to **May 1, 2025**. (See note below). After that date this tour is **non-refundable, for any reason**. **Travel Protection is highly recommended** and is available through C&F Travel Insured. You will be provided with a travel protection quote for the cost of this trip. Travel Protection must be purchased within 14 days of the initial deposit to receive preexisting condition waiver. It is your responsibility to be aware of the terms and limitations of the travel insurance you purchase. All questions regarding travel protection coverage should be directed to C&F Travel insured.

1. This tour may involve non-refundable tickets and refunds will be subject to ticket cancellation penalty according to terms of the ticket vendor.
2. If your payment was made by credit card a 4% processing fee will be deducted from the refund.

Baggage: Baggage is limited to one large suitcase per person plus one carry on. The carry on is your responsibility and will not be included in our hotel baggage handling.

Pick up Locations:

Sheboygan, Discovery Tours. West of building parking lot. **Overnight parking allowed.**

Sheboygan Falls, Piggly Wiggly 1166 Fond du lac Ave. **No Overnight Parking.**

Plymouth, Walmart. Hwy 57. NE corner of parking lot. **No overnight parking**

Responsibility: This tour is arranged and operated by Discovery Coach/Tours, 1139 Pennsylvania Avenue, Sheboygan, WI 53081. Discovery Coach/Tours will not be liable for any inconvenience, loss, damage, injury, accident, delay or irregularity that may occur to any person while not on a Discovery Coach. The services described in this tour brochure are furnished by independent contractors who are not servants or joint ventures with Discovery Coach/Tours. Discovery Coach/Tours act only as agents for such other parties providing services herein. Discovery Coach/Tours reserves the right to make any changes in this itinerary, the route or included features prior to or during the tour as may be necessary for the smooth operation of this tour. Discovery Coach/Tours reserves the right to accept, decline or retain any person as a guest/traveler of this tour at any time.

Magnificent Michigan

Friday, August 15-Wednesday, August 20, 2025

Please fill out this form and return it with your payment: Discovery Tours, 1139 Pennsylvania Avenue, Sheboygan, WI 53081. Please make checks payable to "Discovery Tours."

Name(s): _____

Date of Birth(s): _____

Address: _____

Phone Number: _____ Cell Phone: _____

Email Address: _____

Handicap Room _____ *Dietary Restrictions: _____

I would prefer this room size:

Single occupancy- 1 King Bed

Triple occupancy- 2 Double Beds

Double occupancy- 1 King Bed

Quad occupancy- 2 Double Beds

Double occupancy- 2 Double Beds

Rooming with: _____

Pick up location:

Sheboygan-
Discovery Tours
**Overnight parking
allowed**

Sheboygan Falls-
Blattner's Piggly Wiggly
No overnight parking

Plymouth- Walmart
No overnight parking

Insurance: Optional travel protection is available. You will be provided with a quote for travel protection from C&F Travel Insured. Plans will be purchased by you directly from C&F Travel Insured.

Terms and Conditions: I have read and reviewed the Terms and Conditions that were provided in the travel packet. I agree to abide by the information provided and will accept responsibility for failure on my part to abide by this information. _____ initial

Signature: _____ Date: _____

